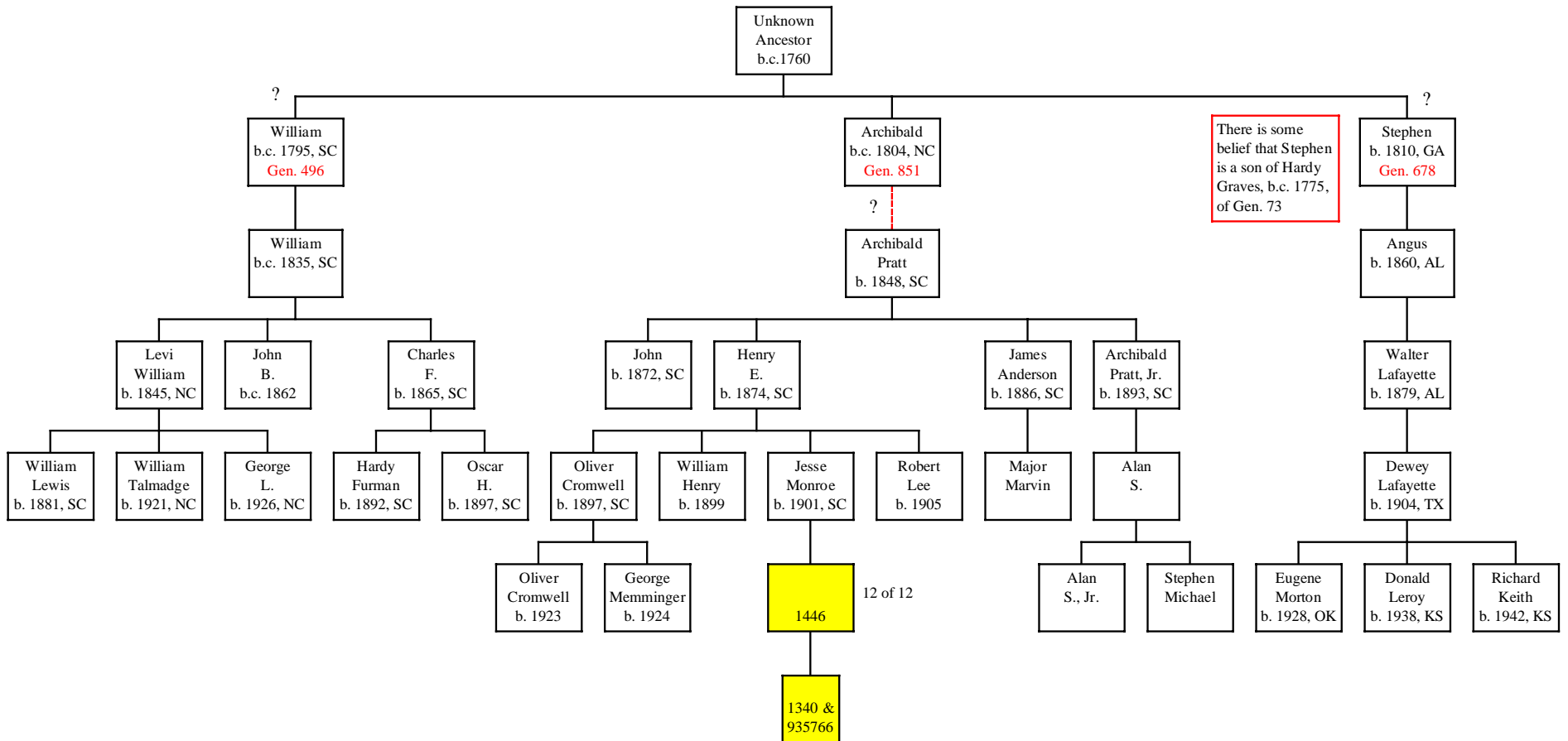


# Descendants of Archibald Pratt Graves and Martha Jane Caulder of SC (Gen. 851)

(Including genealogies 496 and 678. See DNACHart145-217.pdf for a summary of all genealogies in this group.)

(Rev. 11 July 2021)



1340 & 935766

102 of 111

28-20

34-33

35-35

47-10

82-13

83-13

93-11

94-21

96-21

**Big Y700**

BY71978

Private variants

11644328

13414849

20442522

26424145

6496054

NOTES: This chart shows male lines of descent only, since the focus is on using Y-DNA analysis to trace the Graves surname.  
 The number in each bottom colored box is the DNA test ID.  
 When two descendants of a common ancestor have exactly the same DNA test results, it is assumed that the common ancestor also had that result, and all boxes up to and including the common ancestor have been given the same color.  
 All boxes with the same color have the same DNA test results.  
 24 of 25 means that 24 of the 25 markers matched the inferred ancestral haplotype.  
 A notation like 13-19 indicates a mutation from the ancestral haplotype, and means marker 13 had a value of 19.  
 The ancestral haplotype is the set of DNA test results determined for the common ancestor of genealogies 145, 217, 851, and any other related family groups.